

Be careful of heavy rain.

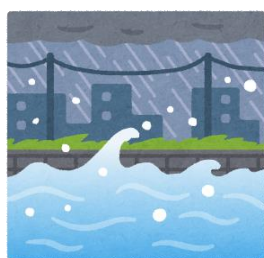


In Japan, continuous heavy rain may occur when the season changes (during this period).

This week (shortly), Typhoon no. 10 is going to hit this area.



Continuous heavy rain may cause severe damage such as landslides of mountains and cliffs and an increase and overflow of river water.



There is a risk that river is going to overflow.



Please carefully check the weather forecast and information published by the municipal office of your town/city to protect your life.

Please check safe places to evacuate near your home and workplace in advance, and evacuate promptly when necessary.