



# **A Multi-Stakeholder Approach to Ensuring Continuous Support and Services for Rehabilitation and Reintegration of Offenders: Focusing on Housing Support**

**IMAFUKU SHOJI (Mr.)**

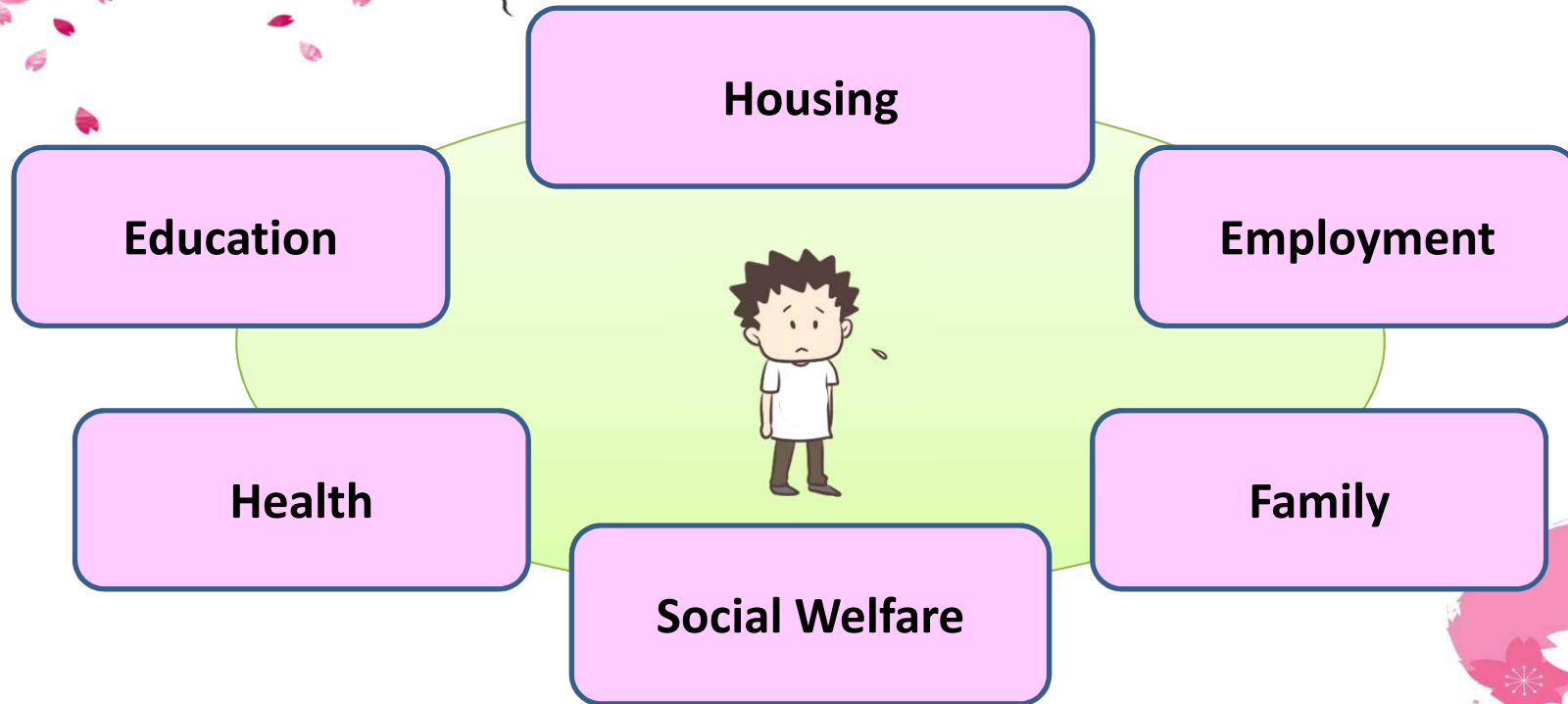
**Director General of the Rehabilitation Bureau**

**Ministry of Justice**

**Japan**



# Diverse Needs for Rehabilitation

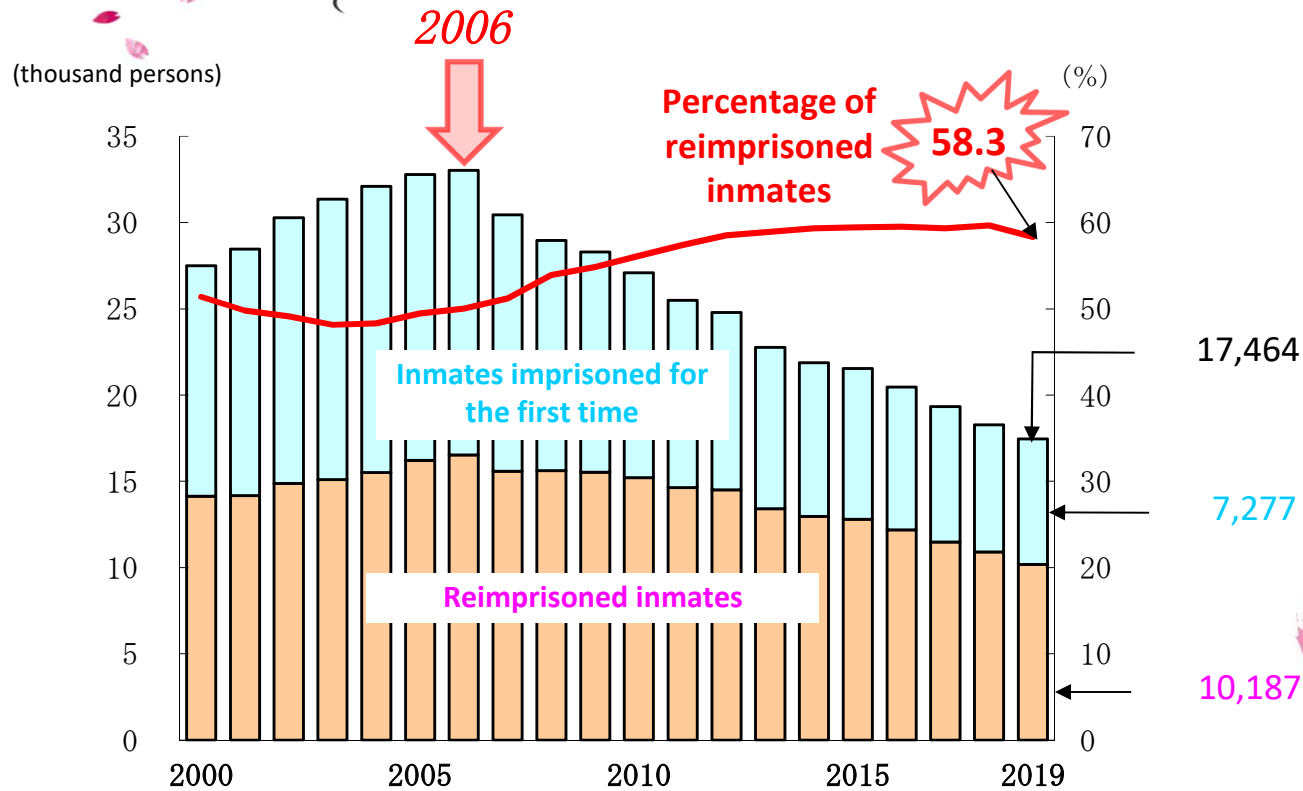
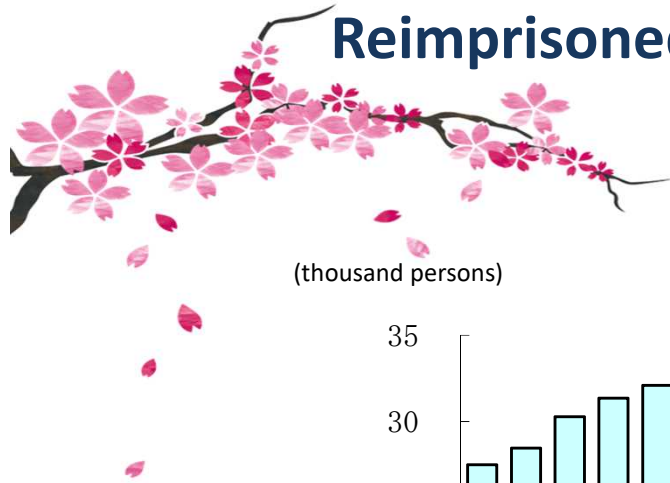




# I Integrated Efforts to Prevent Reoffending in Japan



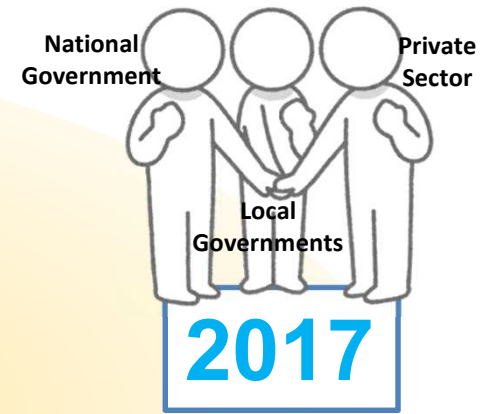
# Reimprisoned Inmates among New Sentenced Inmates



Source: Annual Report of Statistics on Corrections



# Recent National Strategies in Japan



2012

Comprehensive  
Measures to Prevent  
Recidivism

2016

Act for the Prevention of  
Recidivism

2017

**Recidivism Prevention  
Plan**



## II Japan's Approach to Secure Housing

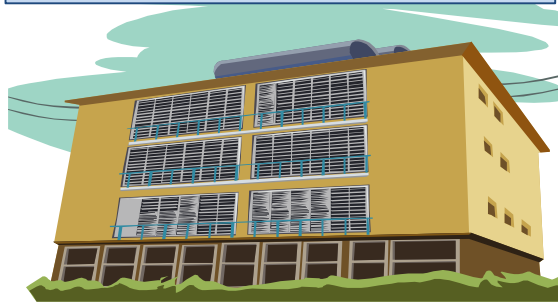


# Coordination of Reintegration into the Community



Correctional Officers

Correctional Institutions



Community

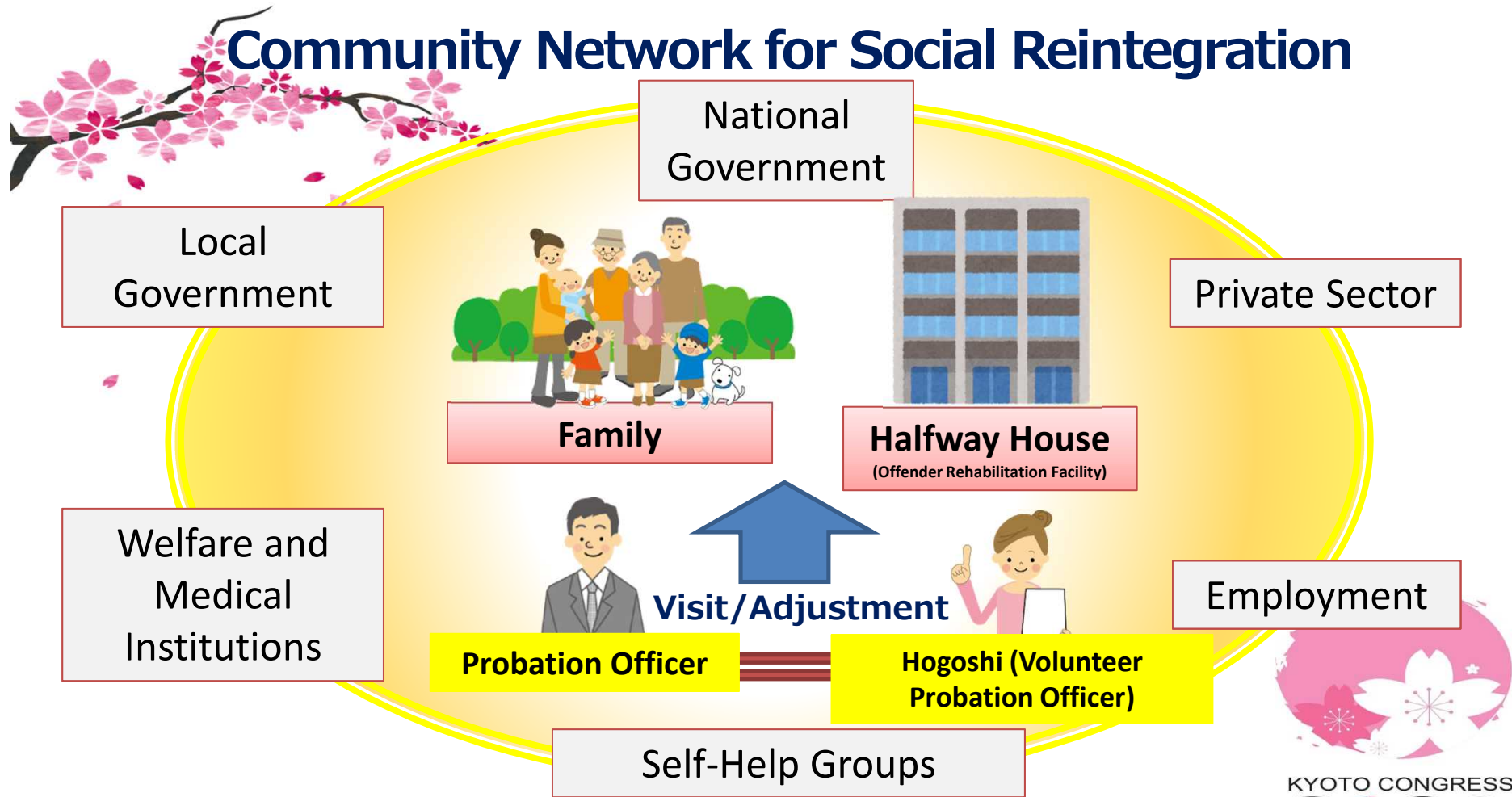


*Reintegration*

Probation Officers

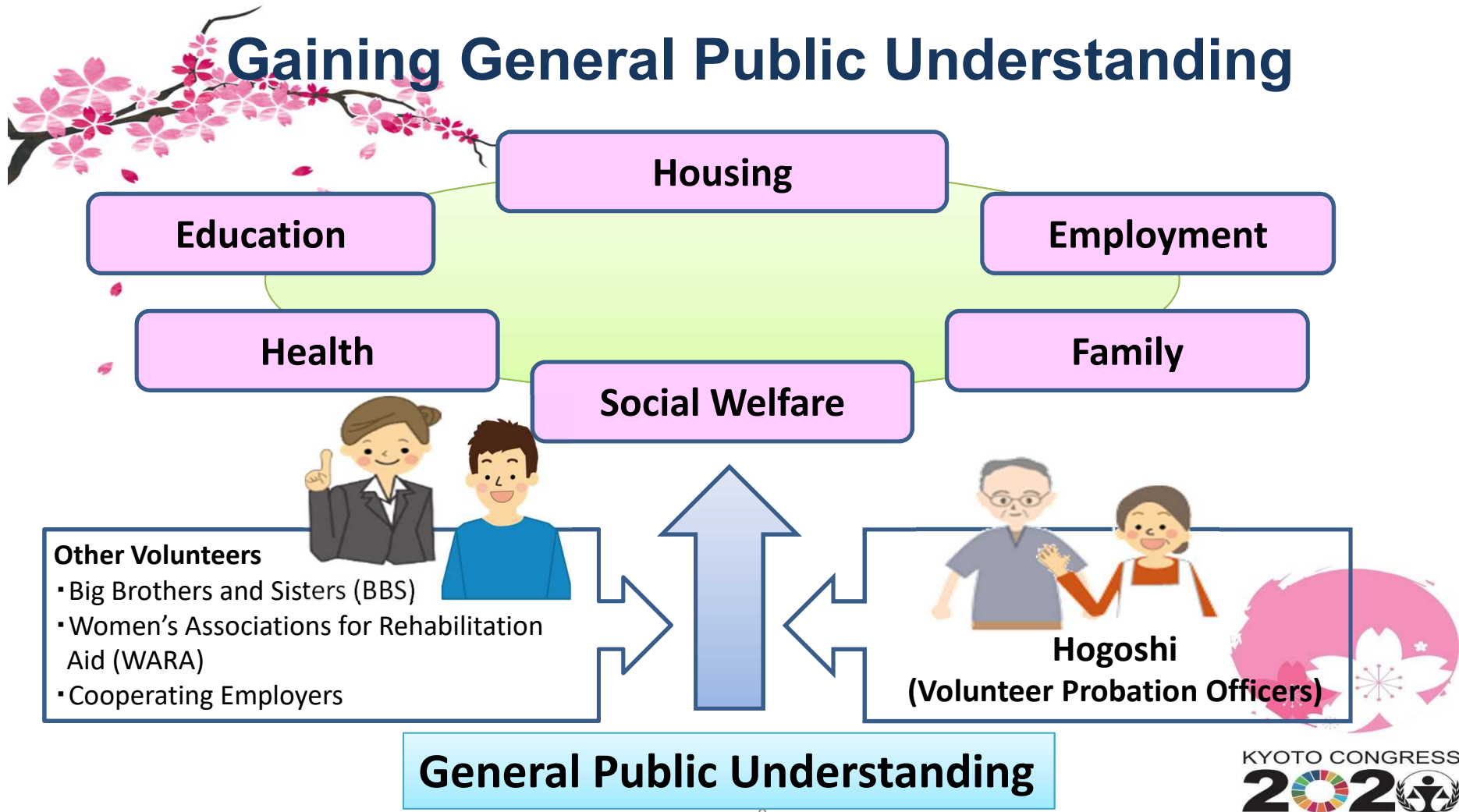


# Community Network for Social Reintegration





# Gaining General Public Understanding





# Collaboration with Local Government



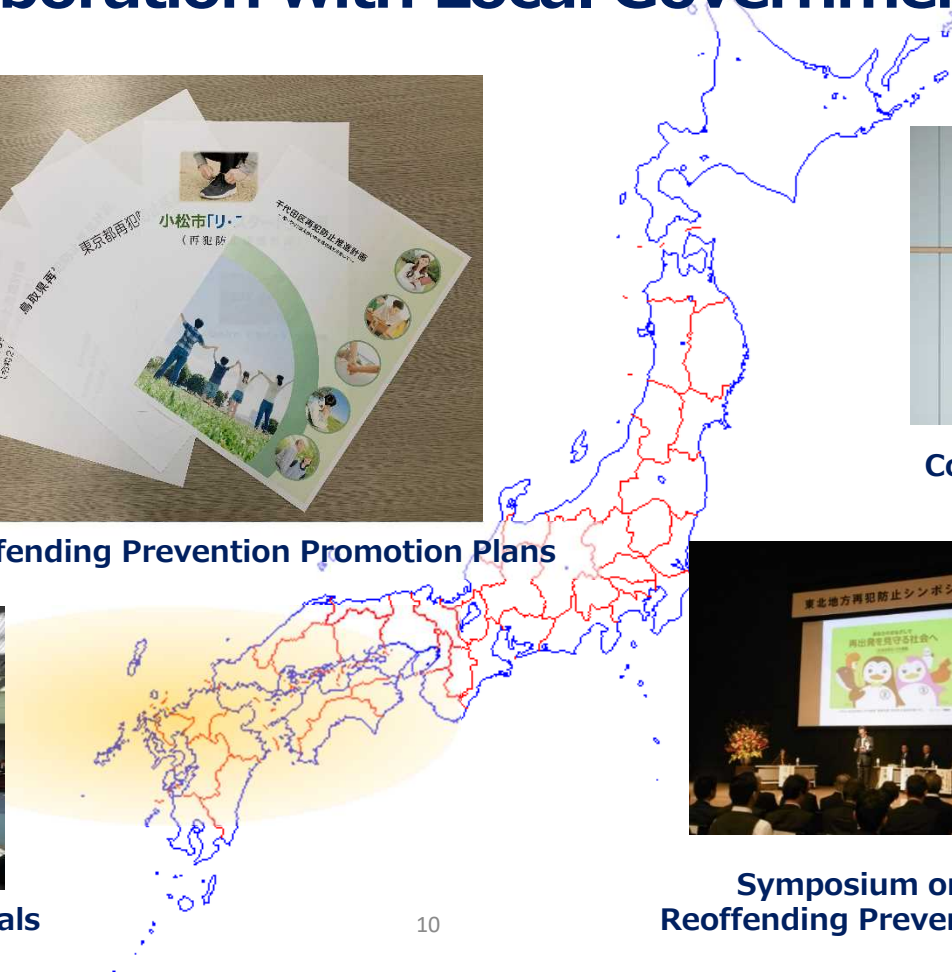
Regional Reoffending Prevention Promotion Plans



Conference of Mayors



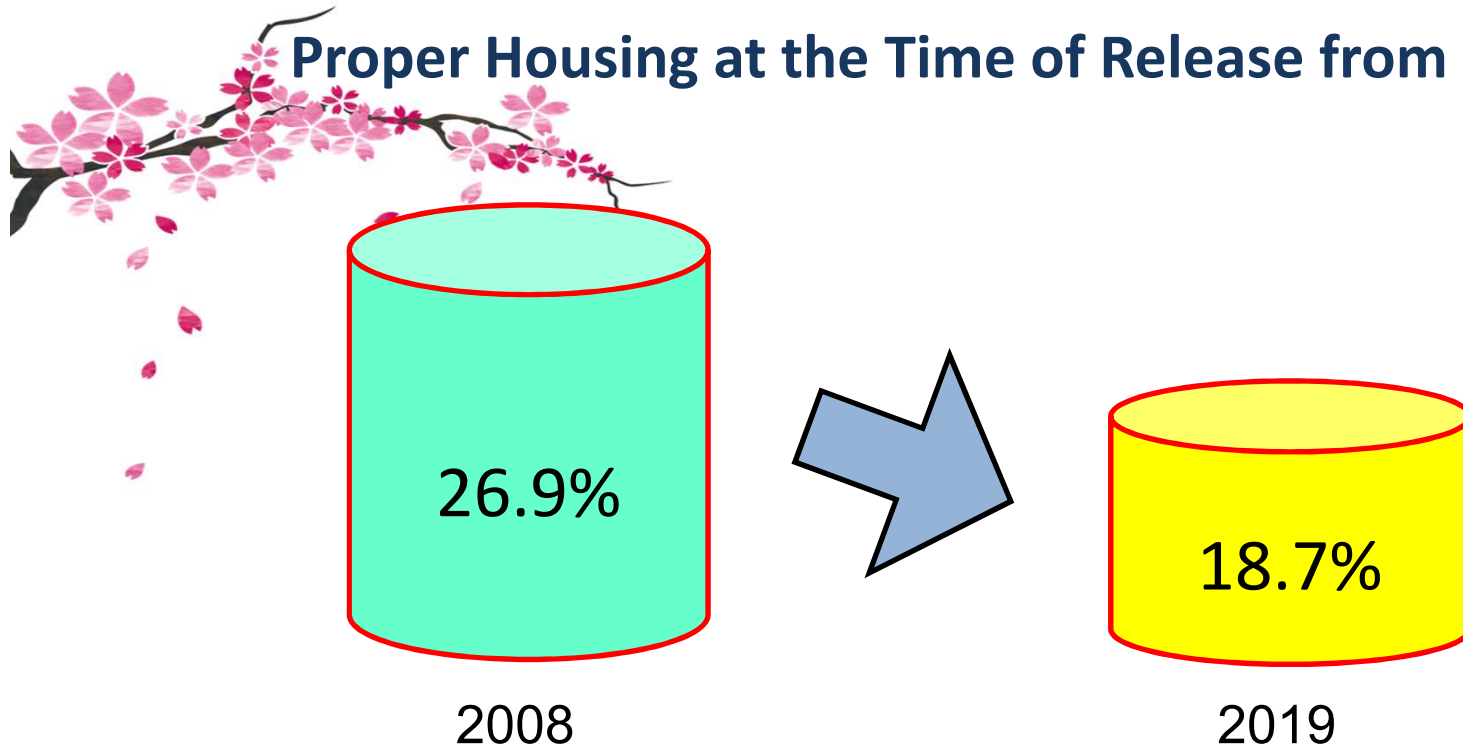
Conference of Prefectural Officials



Symposium on Reoffending Prevention



## Proper Housing at the Time of Release from Prisons



Note: The percentage above shows the proportion of inmates who don't have proper housing at the time of release among released inmates in total.



## Conclusion

### Features of offender rehabilitation in Japan

- Reinforcing the multi-stakeholder approach
- Activating stakeholders' strengths engaged in a variety of areas of services and support
- Gaining public understanding





Thank  
You

