

# White Paper on Crime 2022

- "COVID-19 and the criminal justice system" and "The attitudes and values of offenders and juvenile delinquents"-  
[Summary]

## Introduction

### White Paper on Crime

The annual White Papers on Crime published by the Research and Training Institute of the Ministry of Justice provide statistical data on crimes and offender treatments as well as current issues in the criminal justice field. The first volume of the Papers was published in 1960. Since then, they have been widely used by politicians, practitioners, and academics and have facilitated significant policy changes.

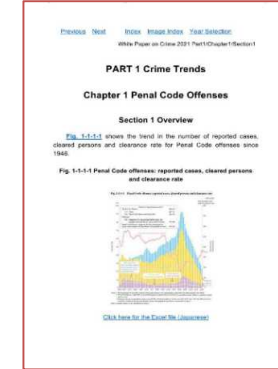
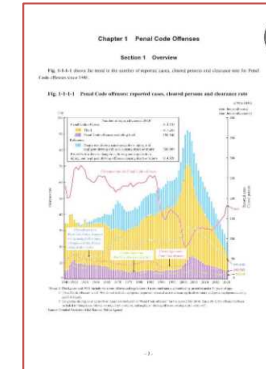
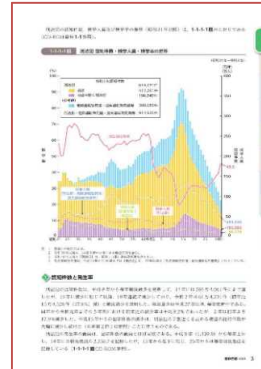
Specifically, the White Paper on Crime 2007 revealed that roughly 60% of all crimes were committed by repeat offenders, who accounted for approximately 30% of convicted offenders. This finding led to the development of “Comprehensive Measures for the Prevention of Re-offending 2012” by the Ministerial Meeting Concerning Measures Against Crime, which has served as the basis of the criminal justice policy of Japan and set numerical targets for the next decade.

All the volumes of the Papers (Japanese version since 1960) and their English version (since 2000) are available on the website of the Ministry of Justice.

([https://www.moj.go.jp/EN/housouken/houso\\_hakusho2.html](https://www.moj.go.jp/EN/housouken/houso_hakusho2.html))

### Research and Training Institute

The Research and Training Institute is one of the agencies of the Ministry of Justice. The Institute conducts a wide range of work, including (i) research related to criminal justice policies and other Ministry of Justice affairs, (ii) various kinds of training for Ministry of Justice officials, and (iii) international cooperation, both in the criminal and civil sectors, for developing countries mainly in the Asian region.



White Paper on Crime (Japanese, English and Web version)

### Special Features of White Paper on Crime 2022

The White Paper on Crime 2022 focuses on "COVID-19 and the criminal justice system" and "the attitudes and values of offenders and juvenile delinquents." The White Paper provides various statistical data and information on the trend in crimes during the pandemic and introduces the challenges the authorities faced. It also analyzes a questionnaire survey on the attitudes and values of offenders and delinquents conducted in January 2021.

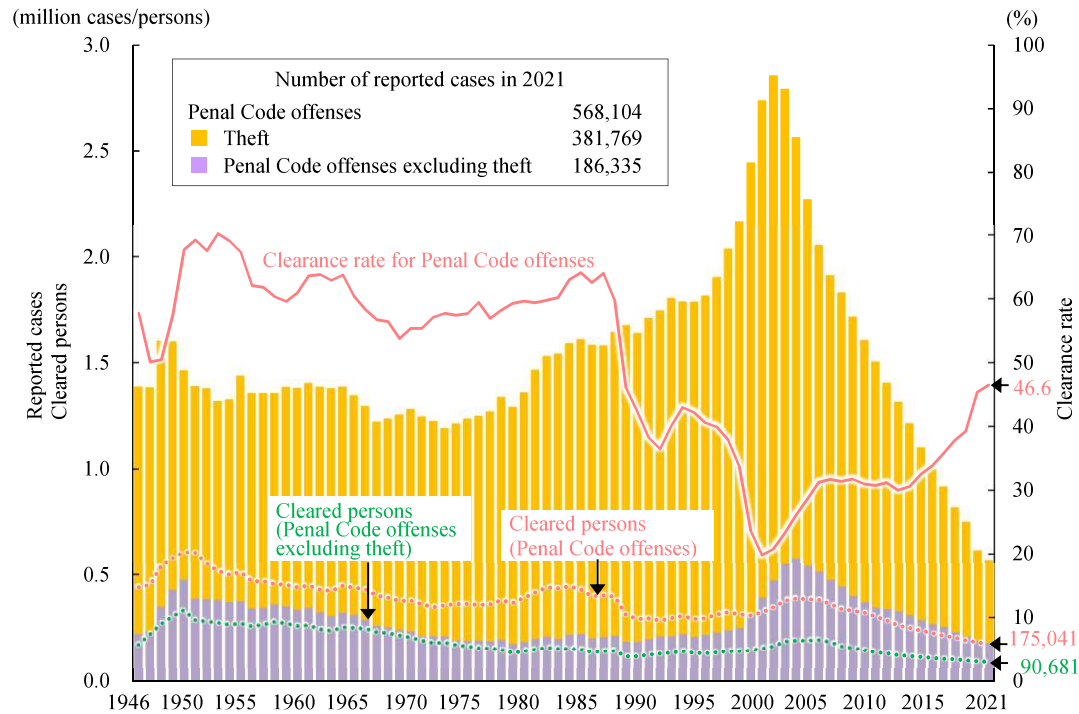


The Research and Training Institute, MOJ

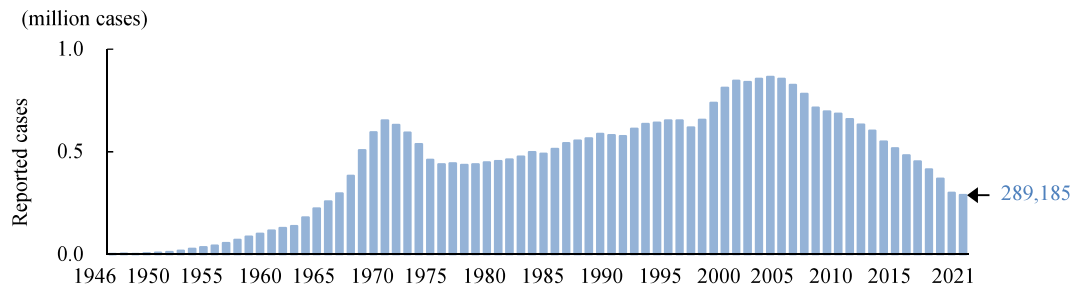
# Crime Trends

## Penal Code offenses: reported cases, cleared persons and clearance rate

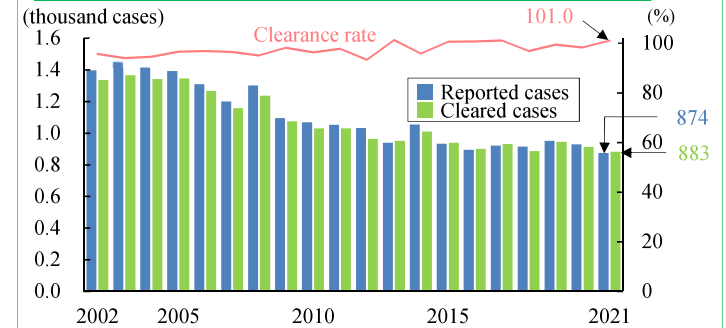
[1] Penal Code offenses



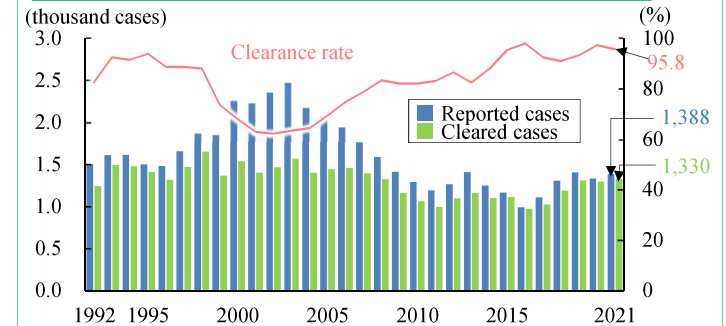
[2] Dangerous driving causing death or injury, and negligent driving offenses causing death or injury



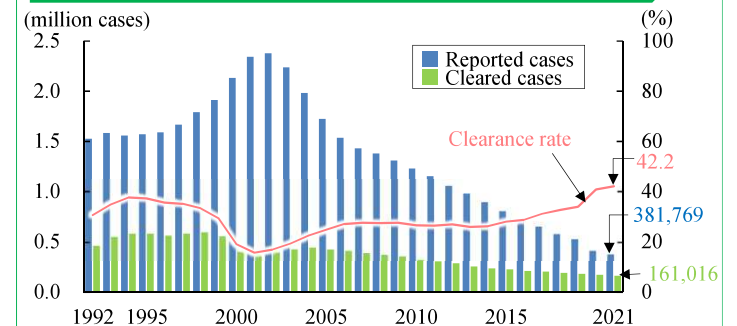
## Homicide: reported/cleared cases and clearance rate



## Rape: reported/cleared cases and clearance rate



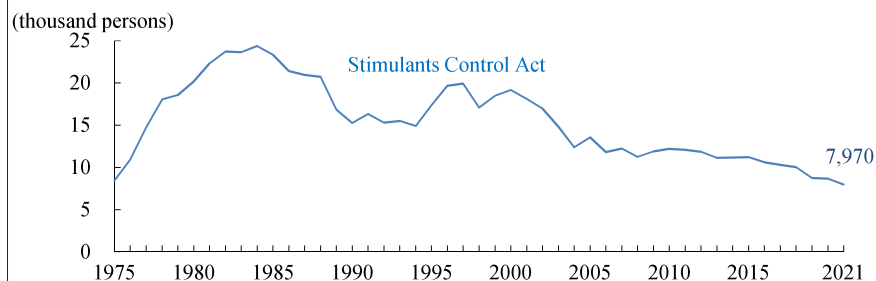
## Theft: reported/cleared cases and clearance rate



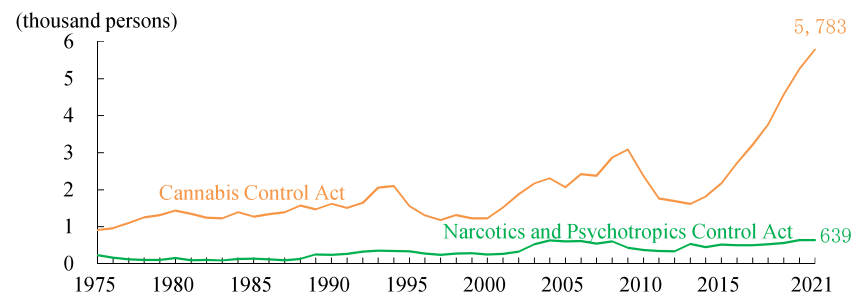
# Specific Offenders/Juvenile Delinquents

## Drug offenses

[1] Violations of Stimulants Control Act: Persons cleared

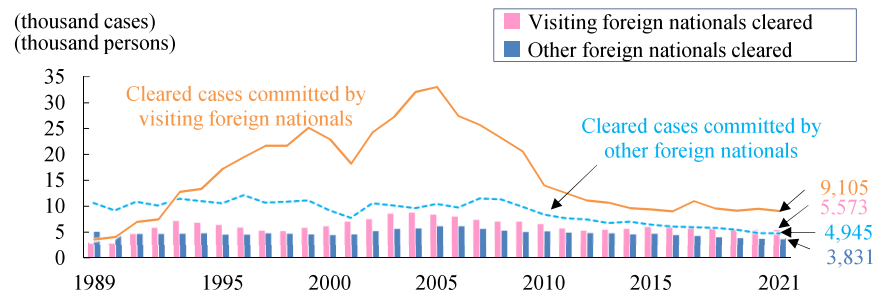


[2] Violations of Cannabis Control Act and other drug control laws: Persons cleared

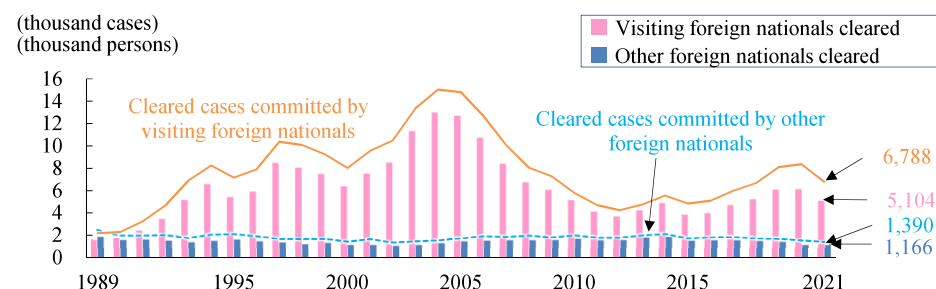


## Foreign nationals

[1] Cases/persons cleared for Penal Code offenses

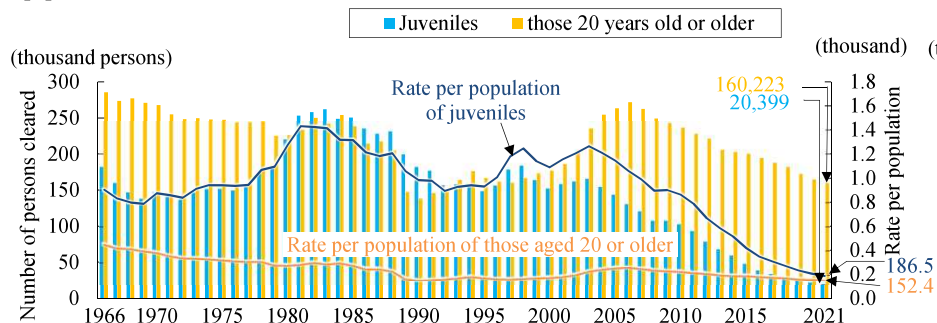


[2] Cases/persons cleared for Special Acts offenses

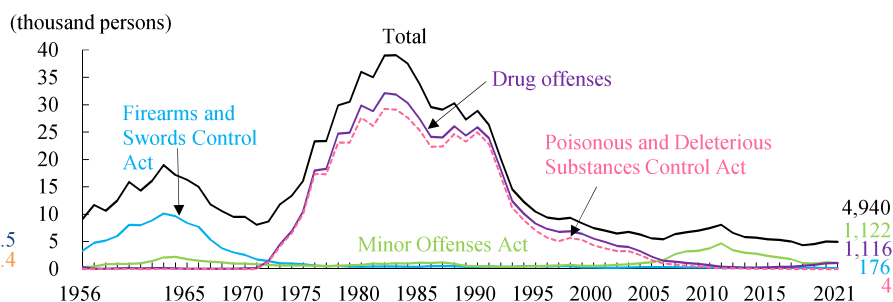


## Juvenile delinquents

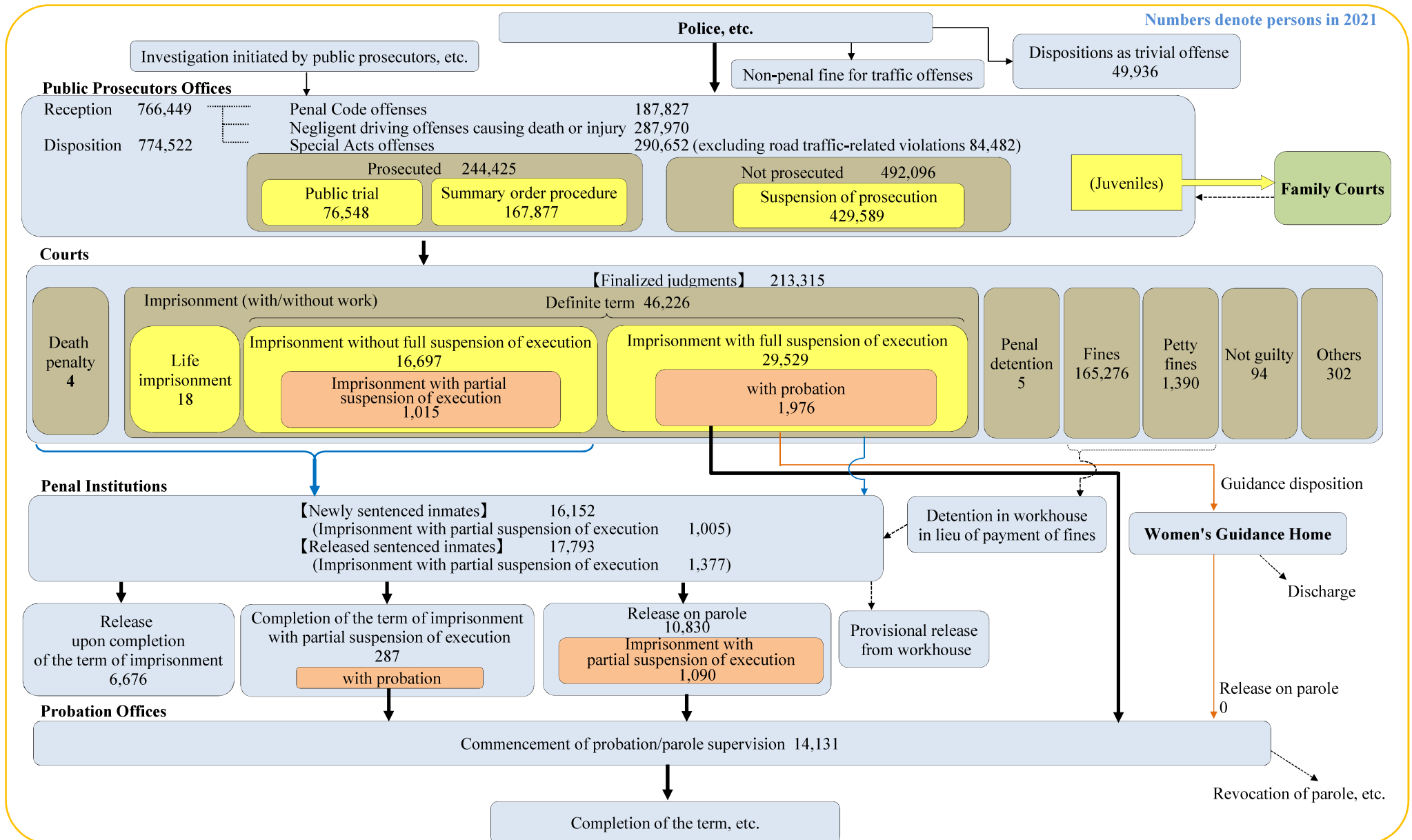
[1] Juveniles cleared for Penal Code offenses



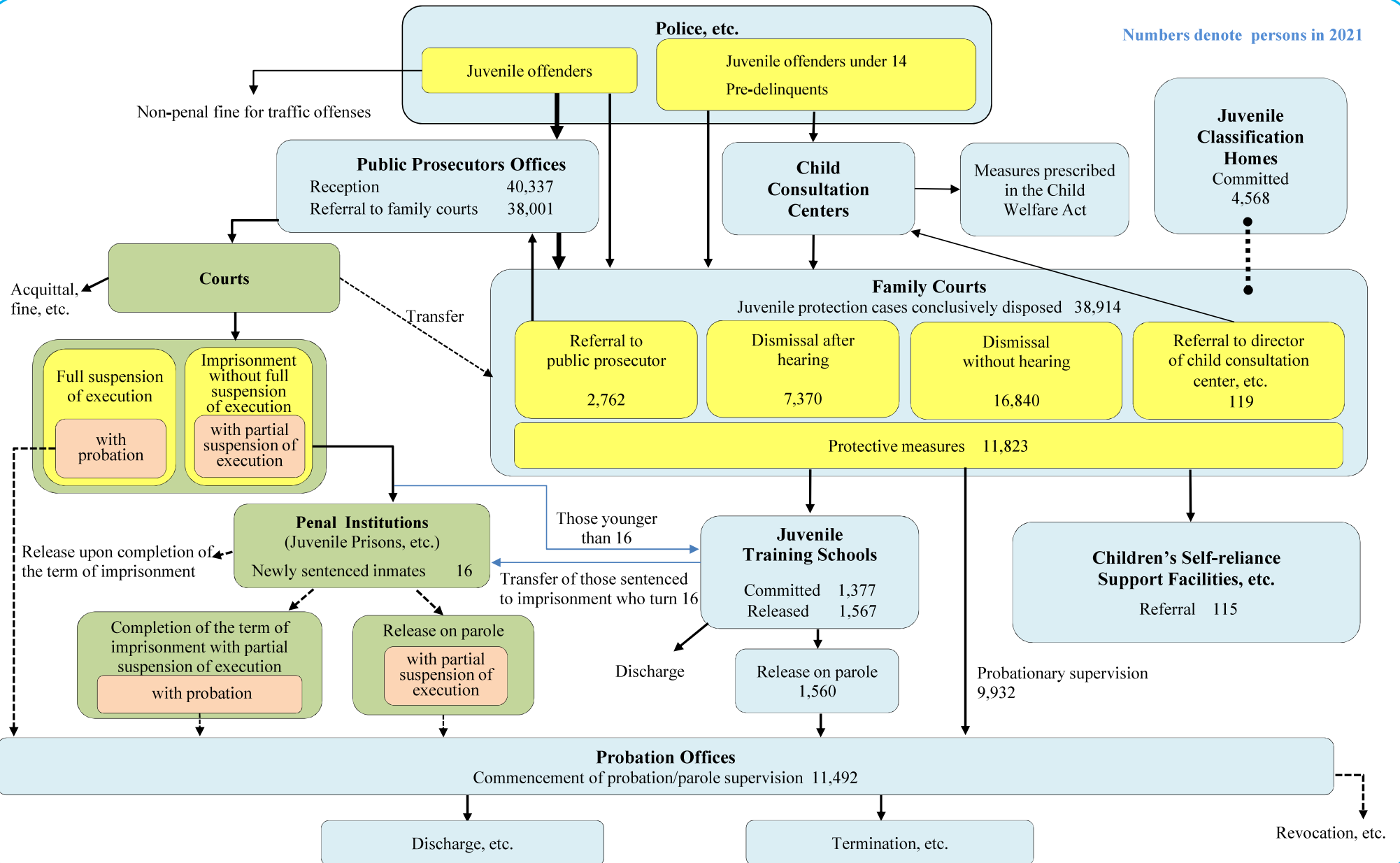
[2] Juveniles cleared for Special Acts offenses



# Procedure of Criminal Justice

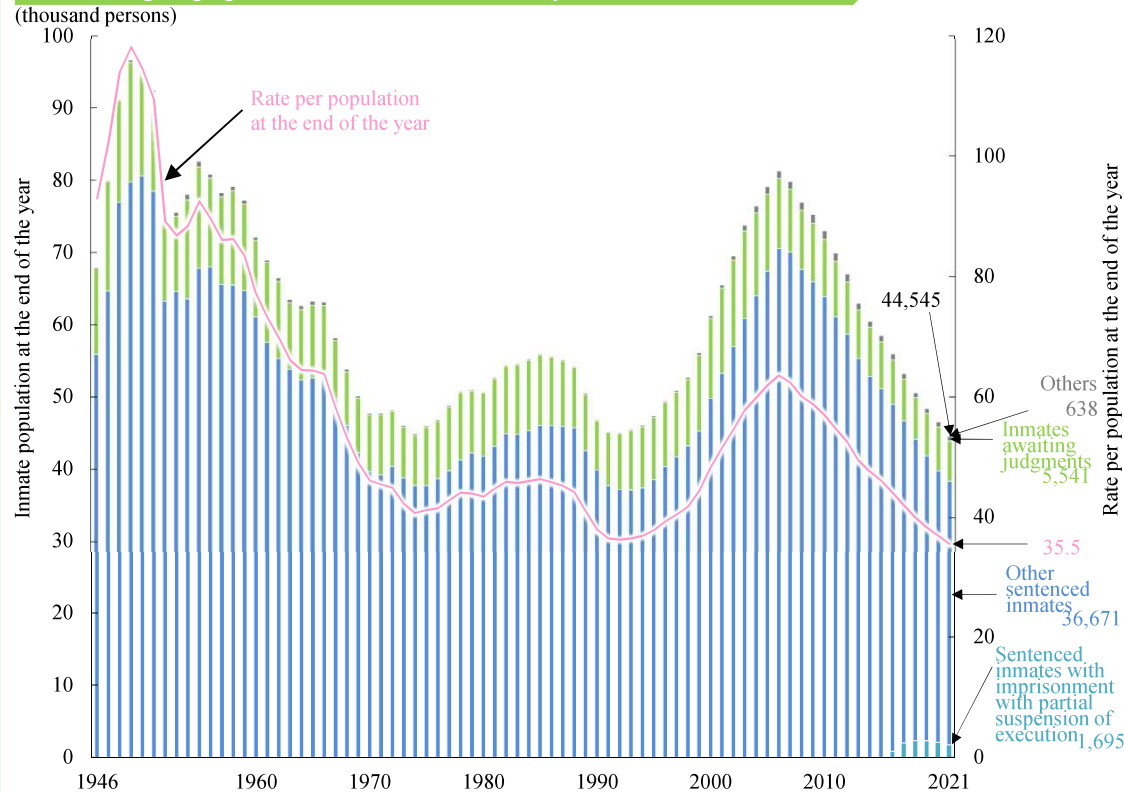


# Procedure of Criminal Justice for Juvenile Delinquents

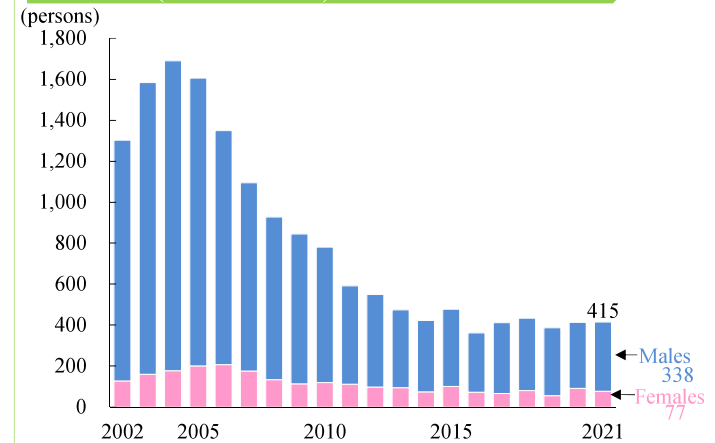


# Treatment of Offenders/Re-offending

Inmate population of penal institutions and rate per population at the end of the year

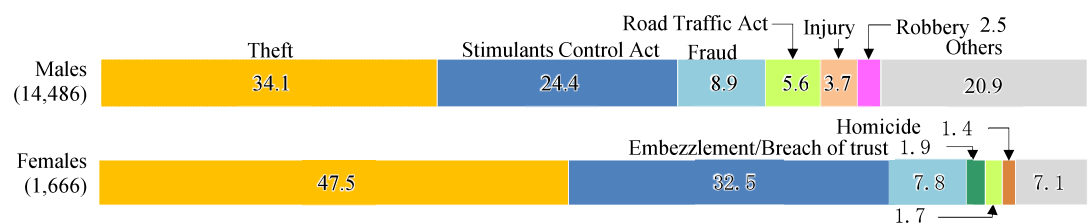


Newly sentenced and F-class categorized inmates (male/female)

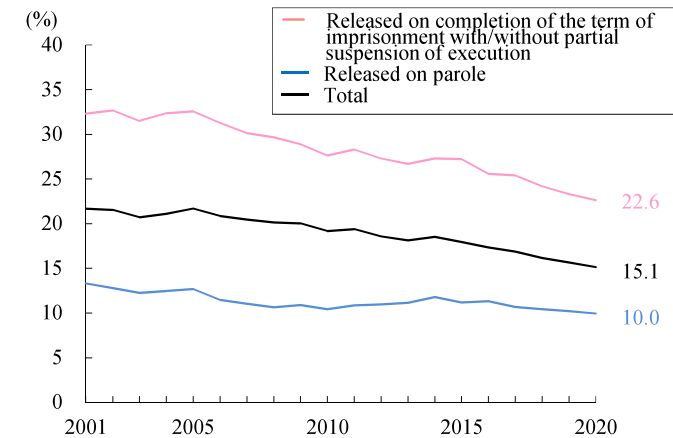


Note: Foreign national sentenced inmates who require different treatment from that of Japanese sentenced inmates are categorized as F-class and provided with treatment in accordance with their culture and life style.

Newly sentenced inmates: composition by type of offense (male/female)



Rate of reimprisonment within 2 years

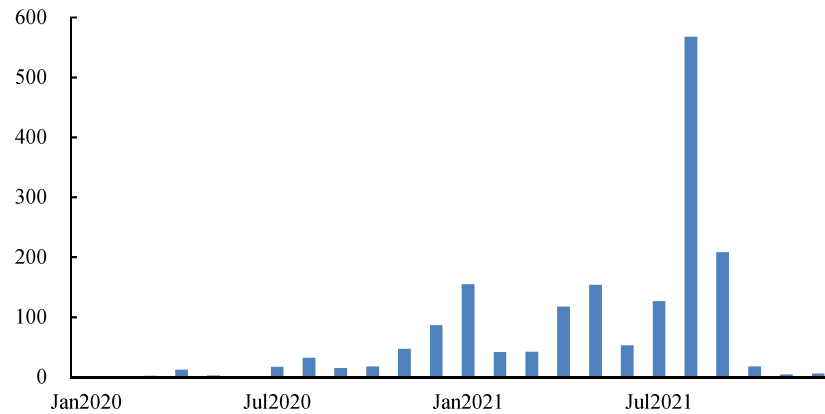


Note: The rate of reimprisonment means the percentage of inmates reimprisoned to serve sentences for offenses after release among the released sentenced inmates of a given year.

# Special Feature: COVID-19 Pandemic

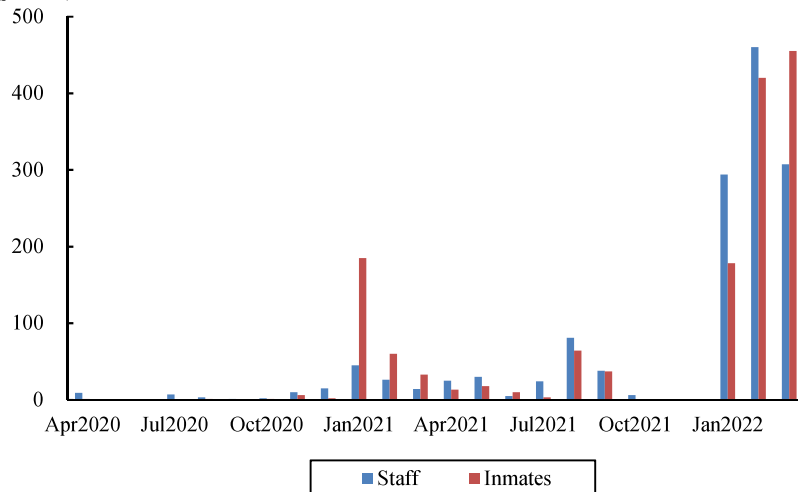
## COVID-19 cases

[1] General population (nationwide)  
(thousand persons)



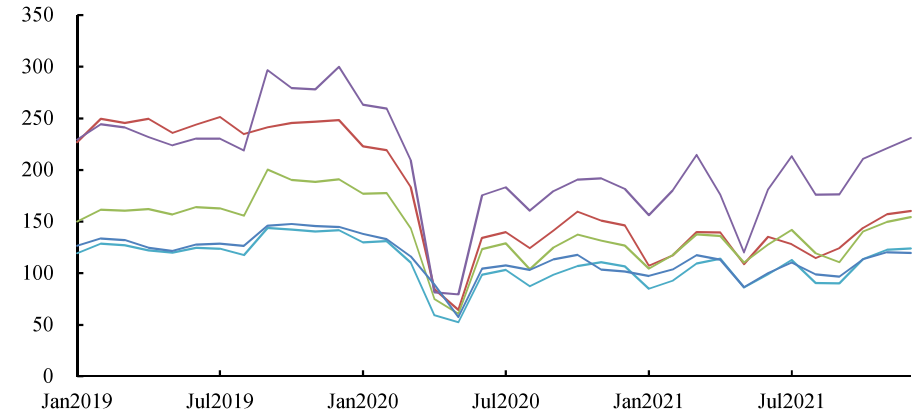
[2] Correctional institutions

(persons)



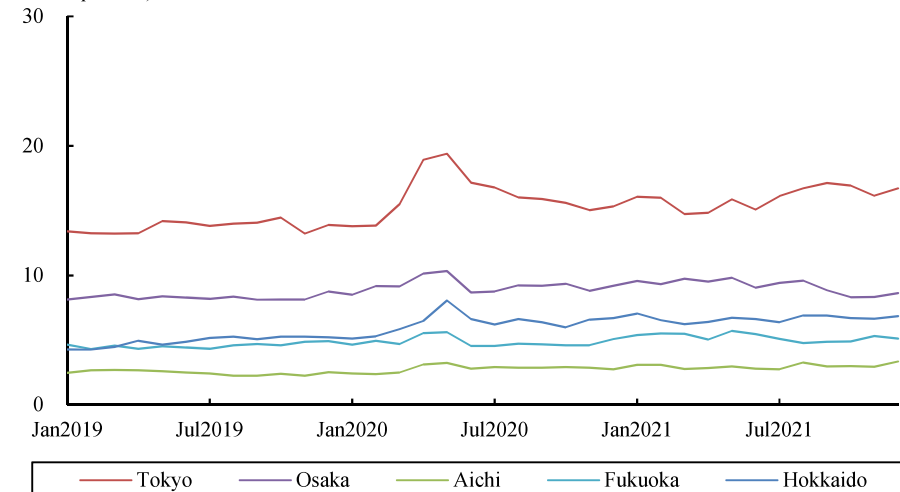
## Mobility of individuals

[1] Around main rail terminals  
(thousand persons)



[2] Around typical rail stations in commuter towns

(thousand persons)

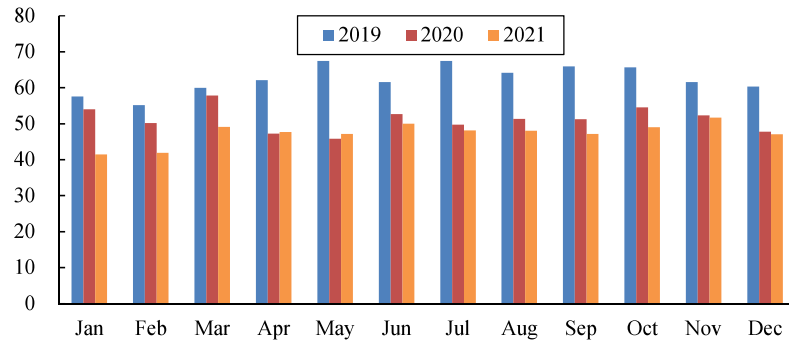




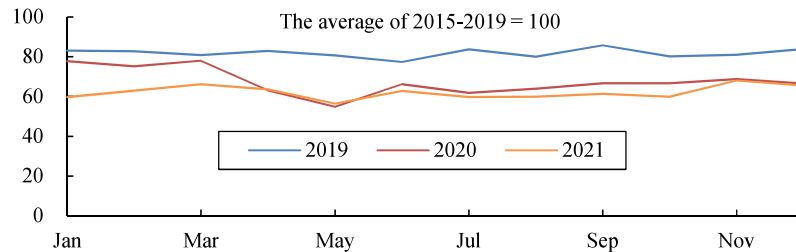
# Special Feature: COVID-19 Pandemic

## Monthly penal code offenses

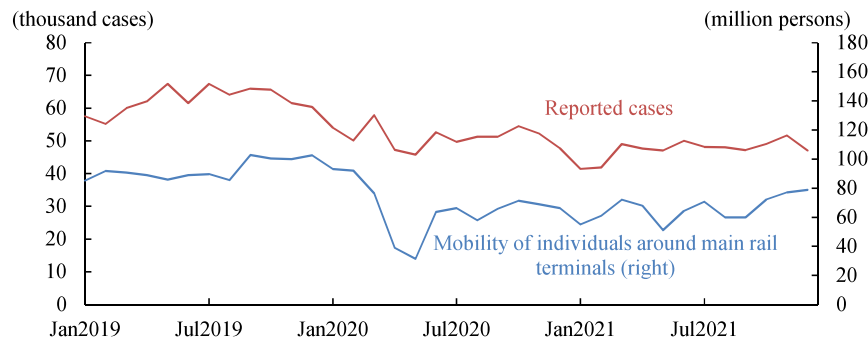
[1] Reported cases  
(thousand cases)



[2] Comparison with average of the same months of 2015-2019

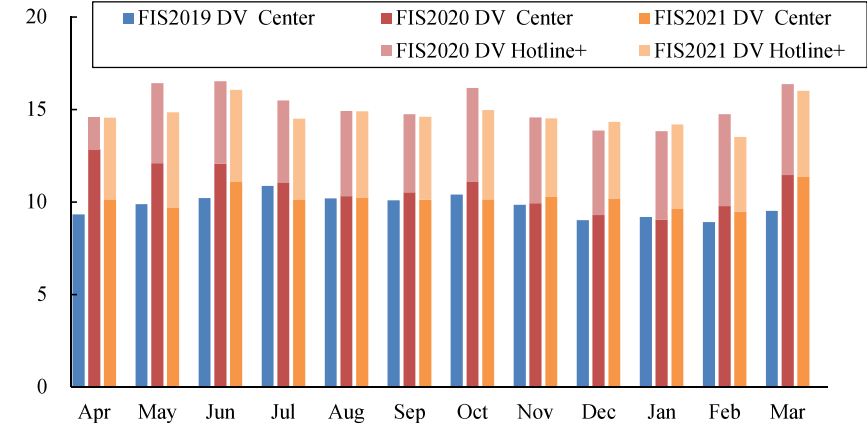


[3] Comparison with mobility of individuals



## DV consultations

(thousand cases)

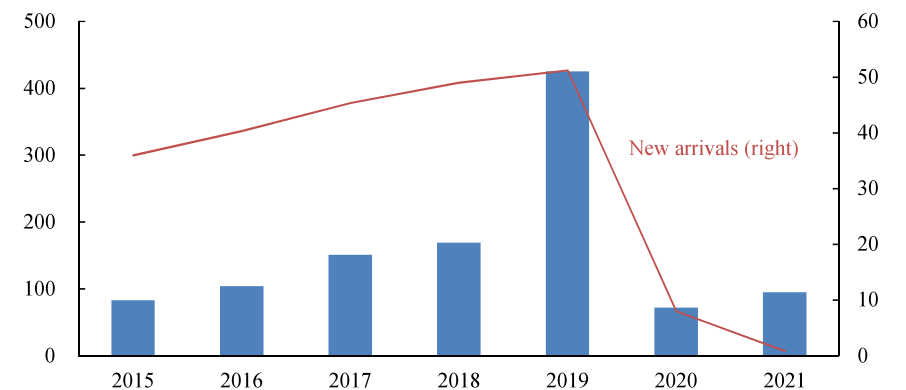


Notes: 1. "DV Center" refers to Spousal Violence Counseling and Support Center.  
2. "DV Hotline+" refers to Domestic Violence Hotline Plus.

## Cleared cases: stimulants smuggling

(cases)

(million persons)



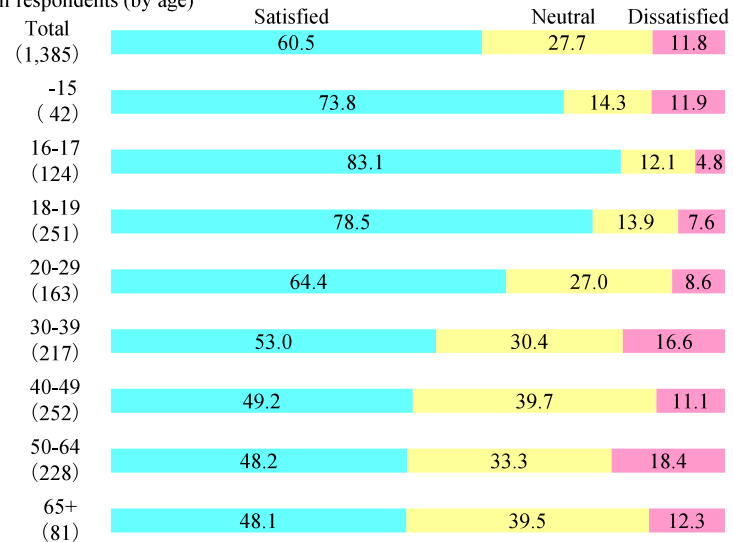


# Special Feature: Attitudes and Values of Offenders and Juvenile Delinquents

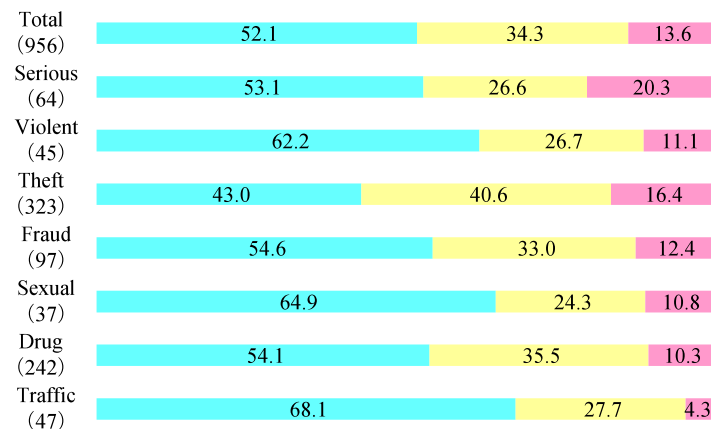
Research and Training Institute conducted a questionnaire survey of offenders and juvenile delinquents in January 2021.

## Family life satisfaction

[1] All respondents (by age)

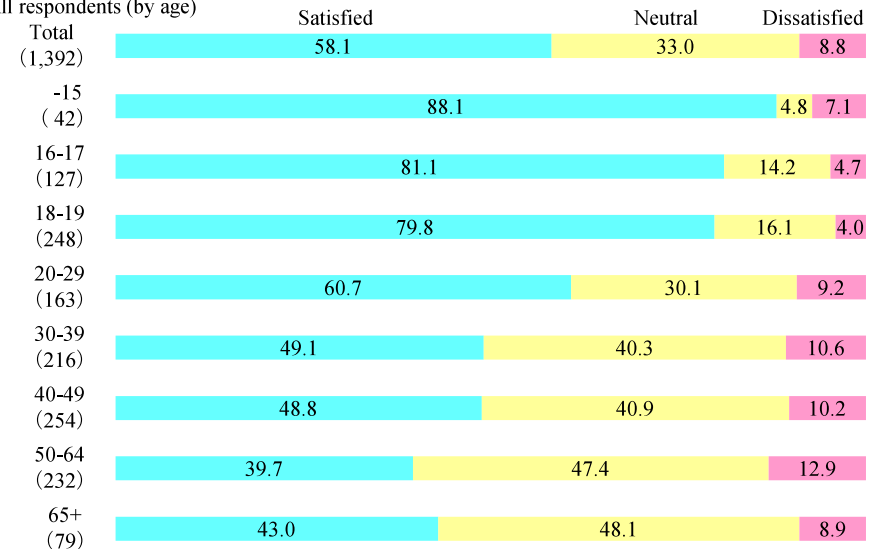


[2] Offenders (by type of offenses)



## Friendship quality satisfaction

[1] All respondents (by age)



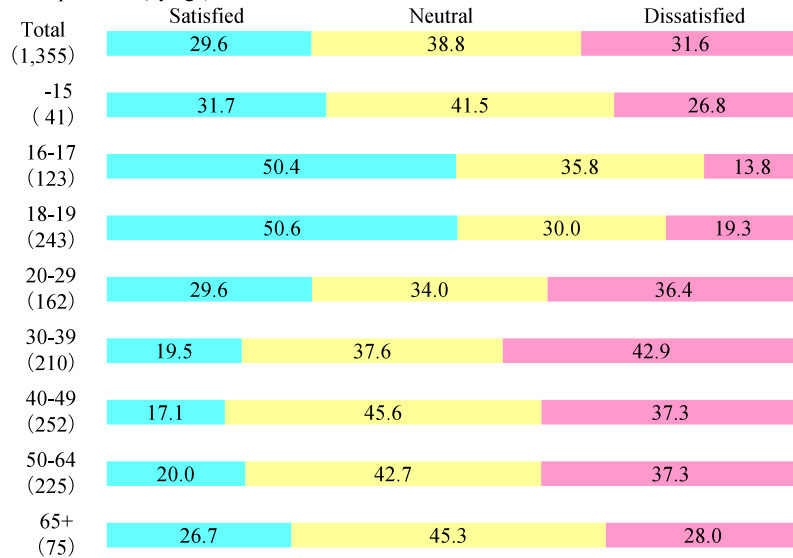
[2] Offenders (by type of offenses)



# Special Feature: Attitudes and Values of Offenders and Juvenile Delinquents

## Life satisfaction

[1] All respondents (by age)

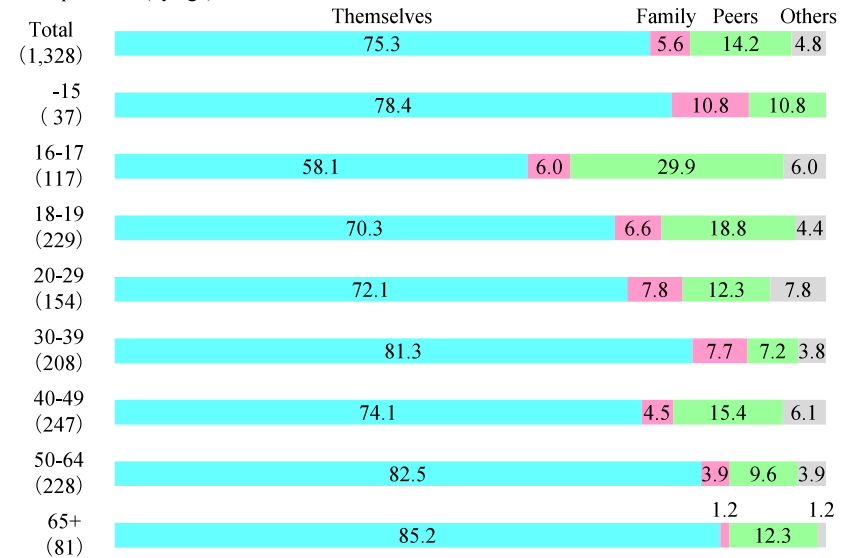


[2] Offenders (by type of offenses)



## Perception of crime causes

[1] All respondents (by age)



[2] Offenders (by type of offenses)

